

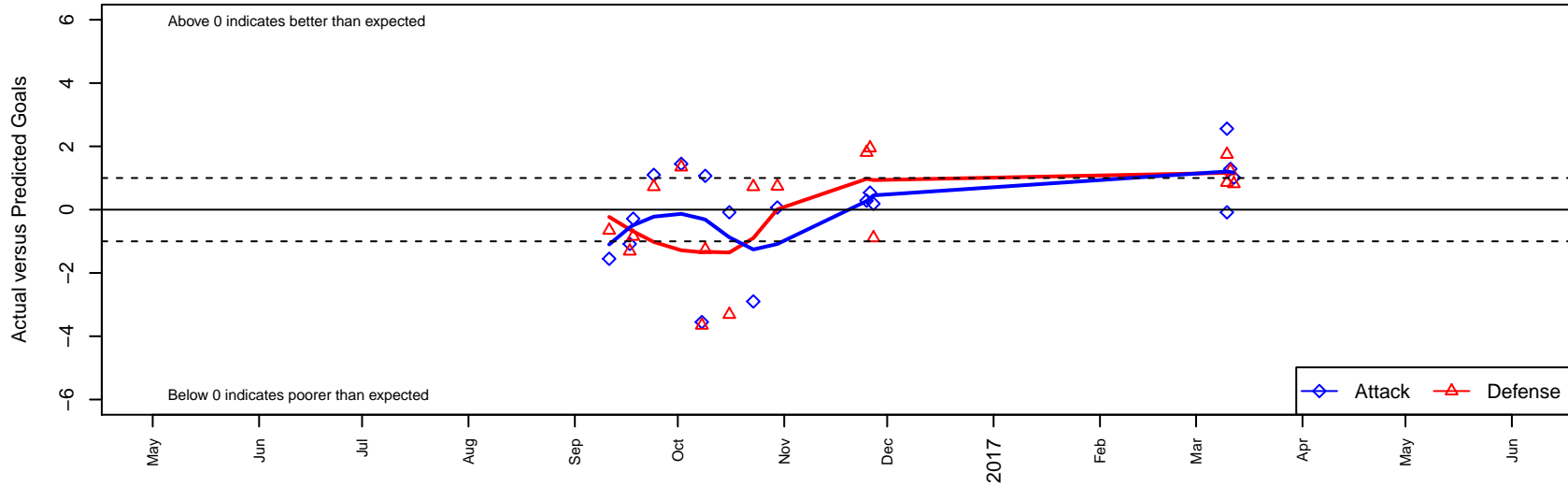
San Diego SC Academy Orange B00

Studio City, CAS
 B00 total strength=1745
 attack=42.66 defense=16.35
 fall league = SCDL FI1 U17
 notes= Sidebottom 2016

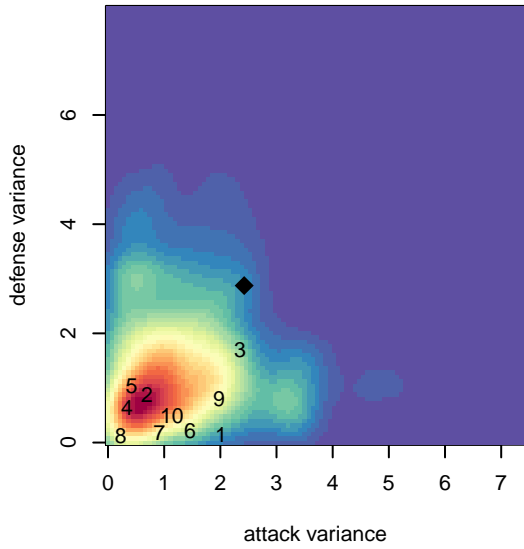
alt names used:
 SAN DIEGO SC SDSC 00 ORANGE (SIDEBO
 SAN DIEGO SC SDSC 00 ORANGE (SIDEBO
 San Diego Soccer Club B2000 Academy Orang

Venues played:
 2016 SCDL FI1 U17
 2016 Carlsbad Nov Nights College Showcase E
 2016 NV Players Showcase Mirage U17

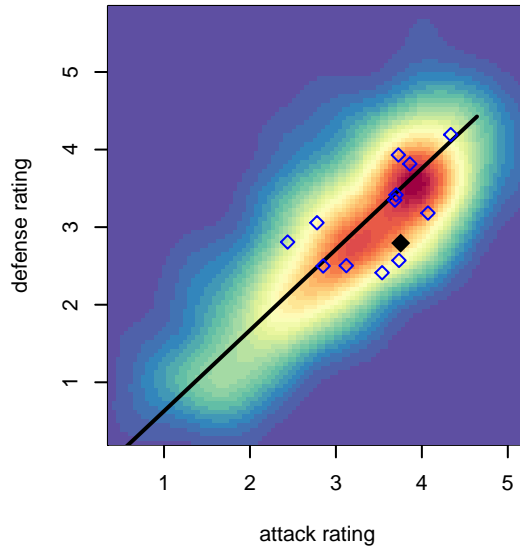
San Diego SC Academy Orange B00
 Dots are actual minus expected GF (blue circles) and GA (red triangles).
 Blue line is smoothed change in attack strength. Red is smoothed change in defense strength.



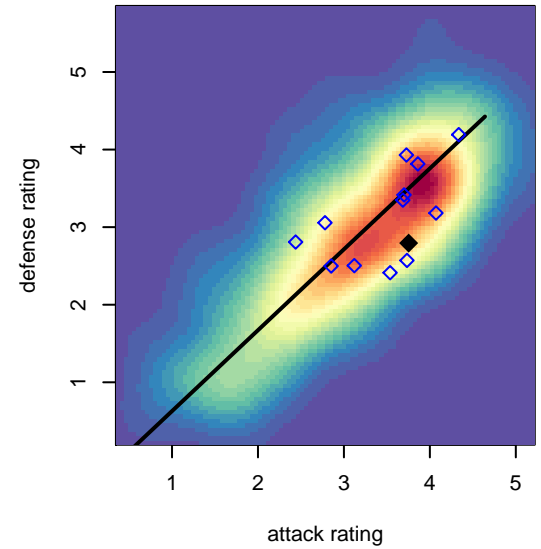
**attack and defense variance (black dot)
relative to other teams
and top 10 in region**



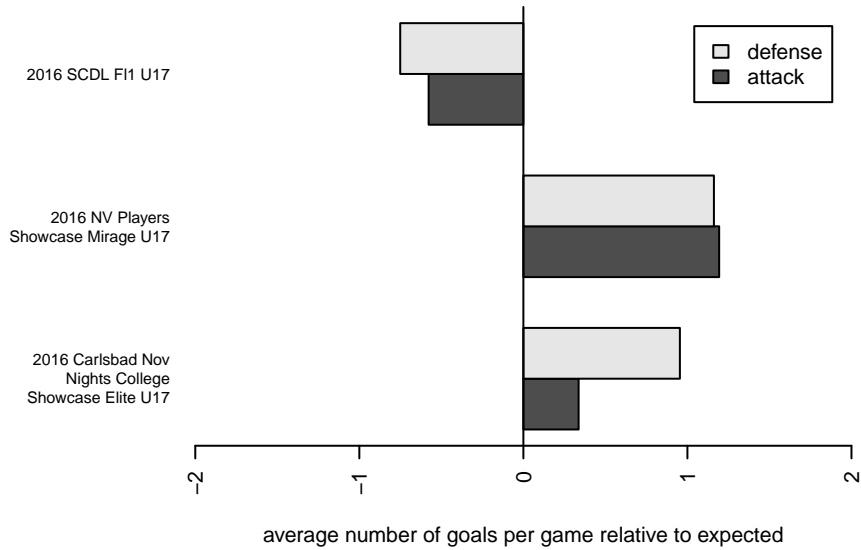
**attack and defense rating
relative to others at age
and all opponents in last 13 months**



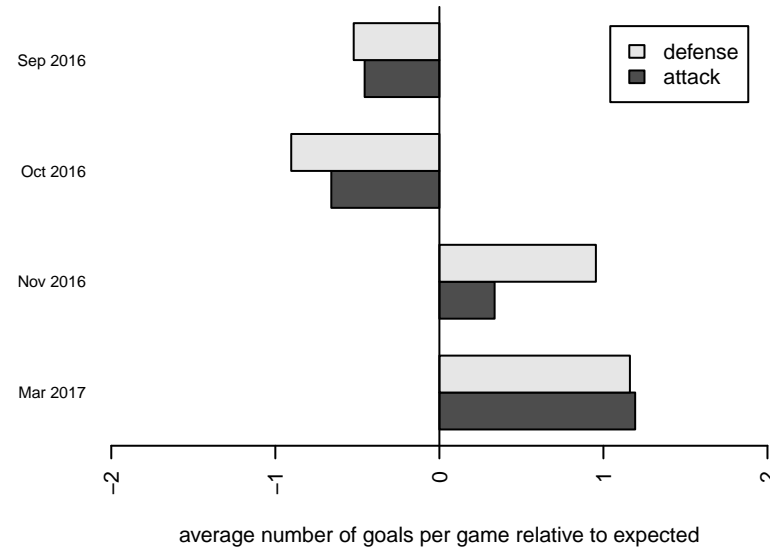
**attack and defense rating
relative to others at age
and all opponents in last 13 months**



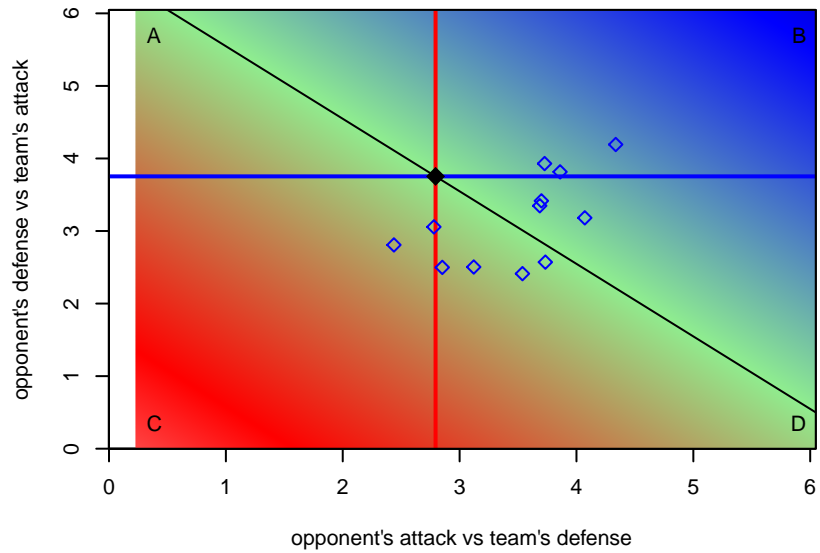
Performance relative to 13 month average



Performance relative to 13 month average



Distribution of opponents
 Red = Lose zone, Blue = Win zone, Green = Even
 Black line separates win/lose zones



lot. A=Neither has attack advantage, B=Opponent has both attack and defense advantage, C=Opponent has both attack and defense disadvantage, D=Both have

te	home		away		venue	pred.home	pred.a
13-12	San Diego SC Academy Orange B00	3	Dallas Texans North B00	0	2016 NV Players Showcase Mirage U17	1.99	0.8
13-11	ANSFE South Florida Elite Red B00	0	San Diego SC Academy Orange B00	4	2016 NV Players Showcase Mirage U17	1.23	2.7
13-10	Sporting St Croix B00	2	San Diego SC Academy Orange B00	1	2016 NV Players Showcase Mirage U17	2.86	1.0
13-10	San Diego SC Academy Orange B00	3	Downtown LVSC Academy B00	4	2016 NV Players Showcase Mirage U17	0.44	5.7
11-27	San Diego SC Academy Orange B00	2	LA Galaxy San Diego Premier B00	2	2016 Carlsbad Nov Nights College Showcas	1.81	1.1
11-26	San Diego SC Academy Orange B00	2	Corinthians B00	2	2016 Carlsbad Nov Nights College Showcas	1.46	3.9
11-25	San Diego SC Academy Orange B00	1	Empire SC Orange B00	2	2016 Carlsbad Nov Nights College Showcas	0.72	3.8
10-30	San Diego SC Academy Orange B00	3	United FC Gold B00	2	2016 SCDL FI1 U17	2.93	2.7
10-23	San Diego SC Academy Orange B00	0	Strikers FC Mission Viego B00	1	2016 SCDL FI1 U17	2.90	1.7
10-16	San Diego SC Academy Orange B00	1	Del Mar Sharks White B00	6	2016 SCDL FI1 U17	1.08	2.6
10-09	United FC Gold B00	4	San Diego SC Academy Orange B00	4	2016 SCDL FI1 U17	2.74	2.9
10-08	San Diego SC Academy Orange B00	0	San Diego Surf SC Academy Select B00	6	2016 SCDL FI1 U17	3.55	2.3
10-02	San Diego SC Academy Orange B00	5	San Diego Surf SC Academy Select B00	1	2016 SCDL FI1 U17	3.55	2.3
19-24	Strikers FC Mission Viego B00	1	San Diego SC Academy Orange B00	4	2016 SCDL FI1 U17	1.72	2.9
19-18	San Diego SC Academy Navy B00	4	San Diego SC Academy Orange B00	1	2016 SCDL FI1 U17	3.15	1.2
19-17	Del Mar Sharks White B00	4	San Diego SC Academy Orange B00	0	2016 SCDL FI1 U17	2.69	1.0
19-11	San Diego Surf SC Academy Select B00	3	San Diego SC Academy Orange B00	2	2016 SCDL FI1 U17	2.35	3.5